

# Harry Potter Year 7: Hogwarts Under Siege

## Robe-Making Workshop, 1/14, 1/16/ 1/17

### Stages:

1. Measuring
2. Drafting
3. Cutting
4. Sewing
5. Finishing

### Before you begin...

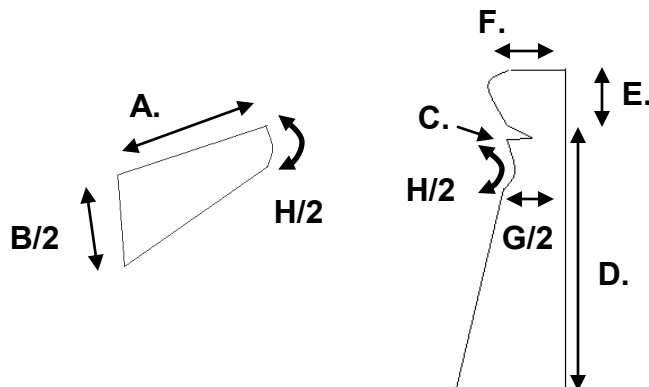
...Some basic sewing principles.

- Some terms to know:
  - **Seam**— the stitch that joins two edges of fabric. Allow at least 1/2 an inch of seam allowance near any seam, or the fabric might rip.
  - **Fraying**— depending on the fabric you use, it might have a tendency to unravel. Avoid this by making straight, clean cuts and going with the bias.
  - **Bias**— the stretch of the fabric. Fabric has a Young's Modulus, but due to the woven structure, only in one direction. If you cut a piece of a garment against the bias, expect it to stretch while wearing it.
  - **Stitch**— Sewing machines have all sorts of fancy stitches. For this workshop, you'll only need a straight stitch: the zigzags and special stitches are for different functions.
  - **Selvage**— The edge of the fabric that doesn't unravel.
  - **Hem**— sewing a raw edge under to hide it and prevent unraveling.
  - **Cotton Broadcloth**— the fabric we'll be using.
- **Cut more than you need.** Don't waste supplies, but don't cut yourself short. Once it's cut, it can't be fixed.
- **Right vs. Wrong side**— Some fabric looks different on one side than the other. Ours doesn't, but once you start sewing the unfinished edges should always face the "wrong" side, so they won't be seen on the robe. With the lined version, all unfinished edges should eventually be covered.
- **Pinning is your friend.** Yes, it will take time, but it will take even longer if you make a wrong seam and have to rip it out. If you pin perpendicular to the edge you're sewing along, you don't have to pull them out at the machine. In the case where you can't pin perpendicularly, if you put the pin in from right to left, you can pull them out as you sew.
- **Ask for help when you're stuck!**

### 1. Measuring:

You'll need the following measurements. Use a tape measure and a partner.

- A. Shoulder to wrist: \_\_\_\_\_
- B. Sleeve width: \_\_\_\_\_
- C. Shoulder to neck: \_\_\_\_\_
- D. Shoulder to bottom hem: \_\_\_\_\_
- E. Height of hood: \_\_\_\_\_
- F. Depth of hood: \_\_\_\_\_
- G. Width of robe at chest: \_\_\_\_\_
- H. Around shoulder: \_\_\_\_\_



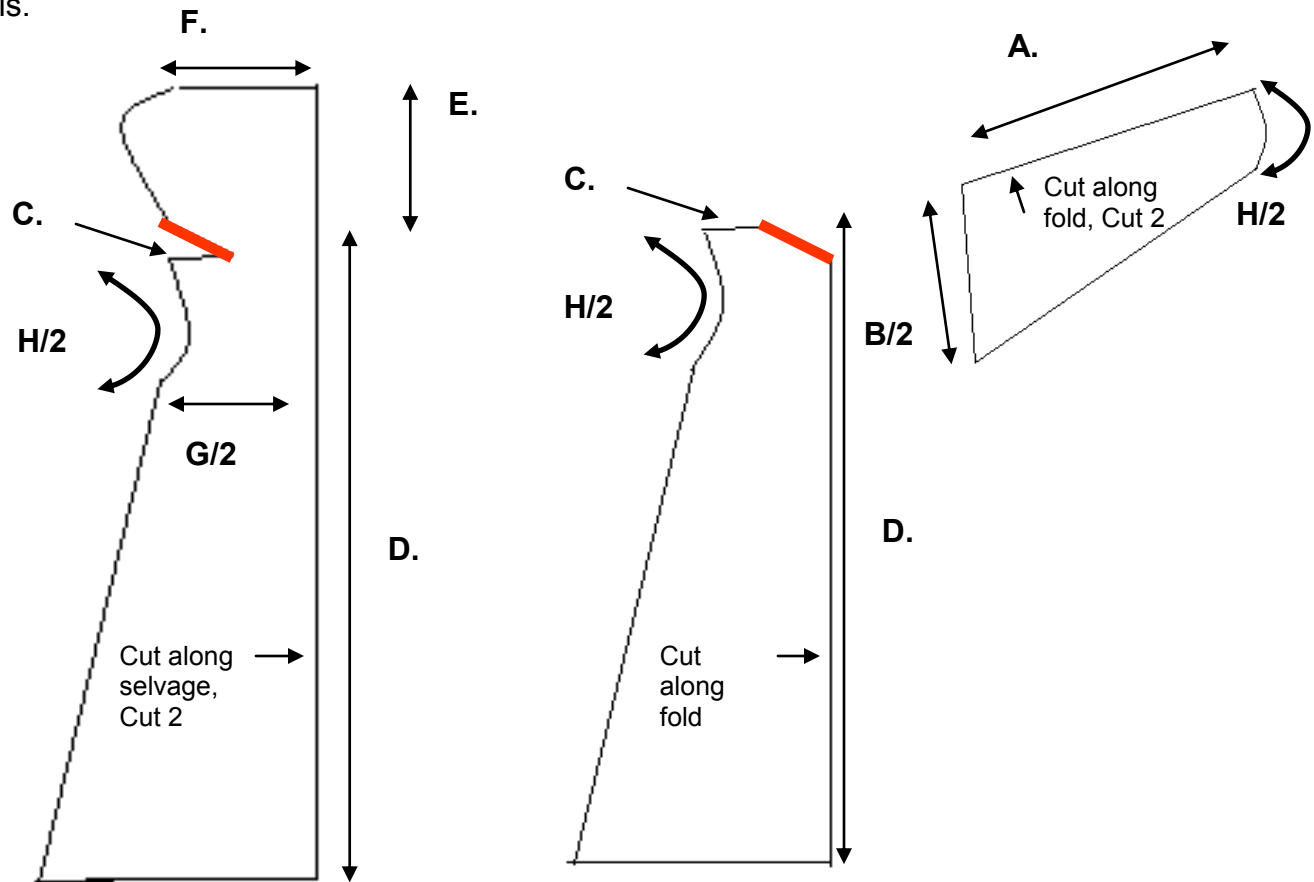
## 2. Drafting:

Now, you'll draw out the shape of your robe in chalk on the fabric. Some things to keep in mind:

- **Conserve fabric:** plan shapes to fit around each other with as little space in-between as possible.
- **Use the selvage** for the front opening of the robe. It will make your life easier, and if you're having an unlined robe, it will mean one less hem to sew.
- **Be sure before you cut.** Redrawing with chalk is trivial: cutting can't be undone.

You'll need five total pieces drafted: two front panels (mirror images), two sleeves (along a fold), and one back panel (along a fold). A good way to cut mirror images is simply to double-up the fabric.

Trace out this shape with your measurements. Since robes are meant to be loose-fitting, leave ~2" of extra room in the arm holes, etc. It's VERY IMPORTANT to make sure the bottom edge of the hood (the heavy red line below) is the same length on the back panel and the front panels.



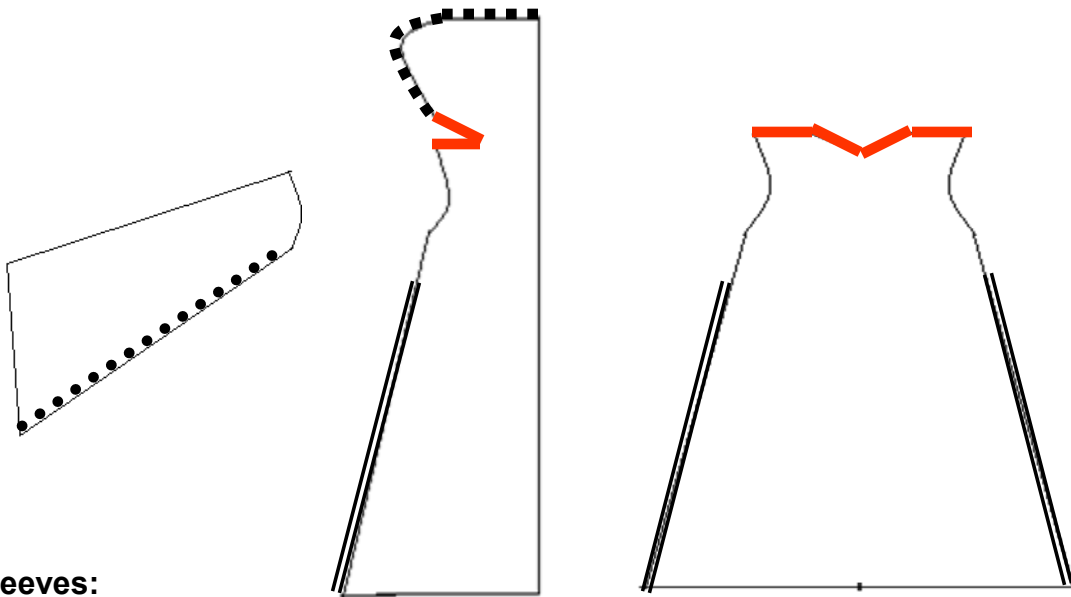
If you're making a lined robe, you'll also cut the same five pieces out of your House color. A good trick is to cut out the first set, then use it as a pattern to cut out the second set.

## 3. Cutting:

Now, cut out your shapes. Again, leave plenty of room for seam allowance. Be sure to keep track of your pieces: putting a piece of masking tape with your name on each on is a good idea.

## 4. Sewing:

Now comes the fun part: piecing it all together. For lined robes, you'll essentially be sewing two separate robes, then attaching them during finishing. Simply follow these directions twice, once with the black pieces and once with the House color. You can skip around between the steps; use your common sense. Again, pinning before you sew is a good idea.



### Sleeves:

- Turning the right sides to face each other, sew along the bottom edge (dotted line) of each sleeve piece. Set these aside for later.

### Hood and shoulders:

- Match up the two front pieces, right sides together. Sew along the edge of the hood (squared line). DO NOT go along the straight, red line from earlier. (NOTE: If you're making an unlined robe, this seam might show inside your hood. If you don't care, move on, but see me if you'd like to see a fancy way to conceal this seam.)
- Open up the front pieces and match them to the back piece, right sides together. Line up the thick, red line, which will be both the shoulder seam and the bottom of the hood. Sew along it. (Again, ask me if you want a clever way to conceal this seam in unlined robes.)

### Sides:

- Match up the sides of the front and back panels, right sides together. Sew up the sides (double lines), leaving about 6" of space below the armholes.

### Attaching Sleeves:

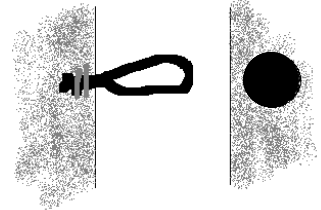
- This is the most complicated part to sew, so use pins. No really, use pins. Turn the sleeves inside out so the right side is now exposed. Open up the front/back piece so you're looking at the right side.
- Fit the sleeve into the armhole so the right side of the sleeve and the right side of the front/back piece are facing each other. Find the top of the sleeve (opposite the dotted-line seam you made earlier). Match it up with the shoulder seam at the top of the armhole. Pin in place.
- Pin along the rest of the armhole, making sure not to stretch the fabric. The seam at the bottom should meet up with the bottom of the armhole.
- Pin up the 6' gap you left earlier, easing it to fit the sleeve.
- Sew around the armhole and sew up the gap. This is tricky: see me if you need help.

## 5. Finishing:

Choose your style, lined or unlined:

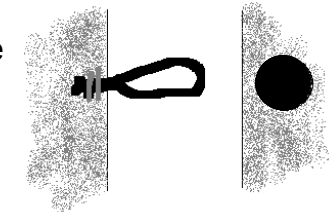
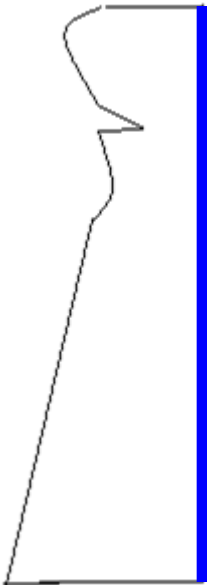
### Unlined:

- Finish all raw edges: turn under the cuffs of the sleeves twice, pin in place, and sew. Hem the bottom using the same method. If you cut your side pieces along the selvage, you shouldn't need to finish the front opening. Otherwise, turn that under and sew as well.
- Grab one or two matching buttons and cut 3" of black cord. Thread a hand-sewing needle. Fold the black cord in half and wrap the ends together using thread, then sew facing outward at the throat of your robe. Sew the button on the side of the loop for closure. If you want, sew another button on to cover the raw ends of the loop.



### Lined:

- Essentially, we're attaching the color and black pieces so that the right side of the color faces inwards (towards you as you're wearing it), and the right side of the black faces outwards.
  - Open up the front/back pieces of both the colored and black robes. Match up the right sides and sew along the opening (the thick blue line below). Turn the whole thing right-side out. If you like, topstitch along this edge again for a neat edge.
  - Match up the cuffs of the sleeves. Turn under twice, pin in place, and sew. Hem the bottom using the same method.
  - Grab one or two matching buttons and cut 3" of black cord. Thread a hand-sewing needle. Fold the black cord in half and wrap the ends together using thread, then sew facing outward at the throat of your robe. (If you want to be REALLY fancy, get a seam ripper and take out a few stitches from the blue-line seam where you want your fastener to go. Slip the ends of the loop inside, sew in place, then sew up the blue-line seam again by hand.) Sew the button on the side of the loop for closure. If you want, sew another button on to cover the raw ends of the loop.



**Congratulations: you've made a robe!**